



omniplex
PROFESSIONAL



B L O S S O M
G L O W
C O L L E C T I O N

toners and hair care ritual



FarmaVita®



DISCOVER

BLOSSOM

GLOW

COLLECTION

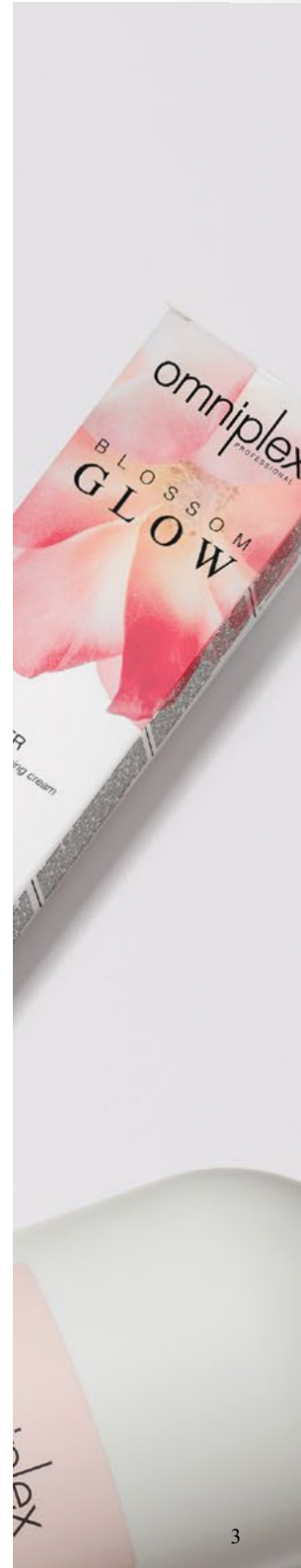
For all shades of blonde

Discover the perfect finish for blonde hair colours with Blossom Glow.

12 new toners with a gentle ammonia free clean formula, for clients who want to enhance their blonde tones, neutralise unwanted warmth or enrich low lights.

Use always in combination with the innovative **Bond Care Shampoo and Mask** to ensure a superior blonde hair quality and long lasting colour results.

Omniplex Tech + Vegetal Keratin



WHY USE A TONER



Our Blossom Glow Toner is like the icing on a cupcake!
The perfect final touch.



Only a toner ensures superior blonde results - for perfectly balanced neutralisation & sophisticated tone enhancement!

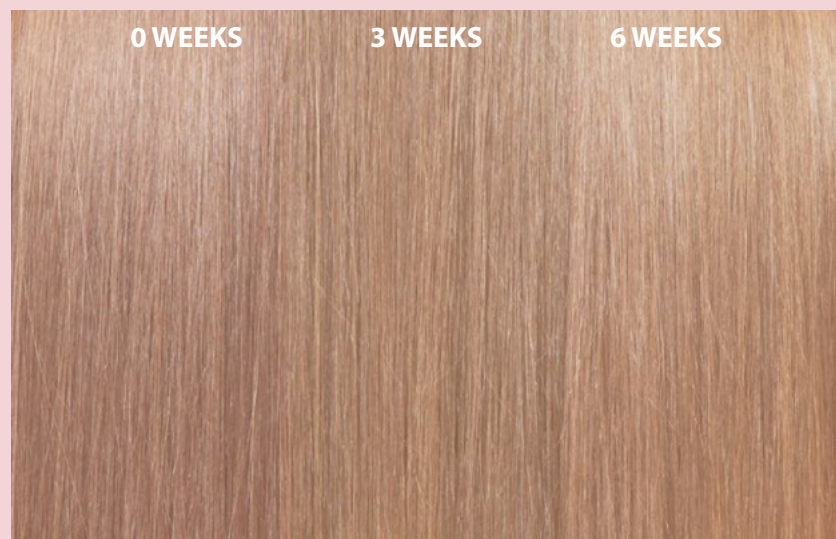
Pictures shows an example of bleached hair before tonalizing compared to bleached hair tonalized with Omniplex Blossom Glow Toner - T 10.21 Ice Irisée and T 10.11 Ash.

WHY BLOSSOM GLOW TONER

- 1 Toners (T)** enrich tones and neutralize unwanted warm tones on light blondes. Suitable for pre-bleached bases and natural **base 9 or lighter**.
- 2 Deep Toners (DT)** developed to enhance pre-lightened or naturally blonde darker bases. Ideal for low lights. Suitable for pre-bleached bases and natural **base from 5 to 9**.
- 3** The **ammonia free** clean* formula is **gentle** on the hair, enriched with **Argan Oil** and **Vitamin E**.
- 4** Easy and versatile application for use with both **brush and bottle**.
- 5 pH-Balanced Technology** ensure a **healthy looking shine** and long lasting colour result.
- 6** Our Toner Collection is developed to work in synergy with our Omniplex Blossom Glow Bond Care Shampoo and Mask to maintain the hair's pH balanced, this ensures a **better color result** and a **better hair's texture**.

UP TO 6 WEEKS COLOUR GLOW

With bleaching services in high demand, Omniplex Blossom Glow Toner Collection is your **precious assistant** to turn those lightening results into **beautiful blonde tones for up to 6 weeks***. A perfect balance of color and glow in a gentle creamy ammonia free formula to get the perfect finish for blonde hair colours!



BLOSSOM GLOW TONER T 9.5

**hair is washed 3x/week, with Omniplex Blossom Glow Bond Care Shampoo.
Instrumental testing. Test carried out on 5 people. Standard application on pre-bleached level 5 hair.*

CLEAN FORMULA

✓ pH-Balanced Technology

✓ Zero Ammonia

✓ Zero Alcohols

✓ Zero Direct Dyes

✓ Zero Damage

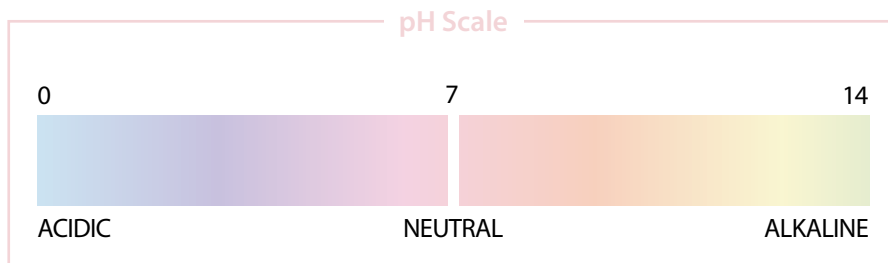
♥ Vegan Formula



THE IMPORTANCE OF pH

It's All About Balance

Chemical services and external influences (heat, pollution, sun...) change the hair's natural pH. For example to alkaline during a bleaching service. To maintain healthy hair it is necessary to return to its natural pH level.



Acidic vs Alkaline

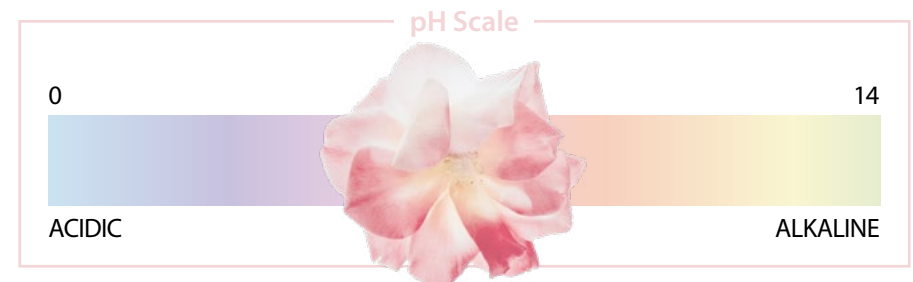
Draws the cuticles together, this creates a smooth surface. Applied to the hair an acidic pH flattens the cuticles hardening the hair's surface, this makes the hair smooth and shiny.

Helps to soften and swell the cuticle, this allow the color to enter the hair's cuticle.

pH-BALANCED TECHNOLOGY

pH-Balanced

Our pH-Balanced Technology regulates the hair's pH level throughout the colouring process in a controlled range. This allows to protect the integrity of the hair, which means zero damage.

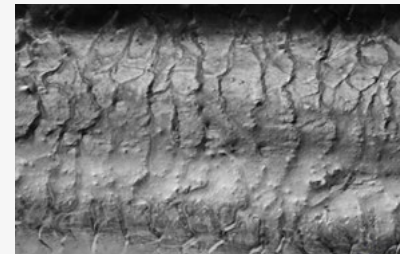


The Innovation: pH-Balanced System

Blossom Glow Toner Collection perfectly works with our ultimate colour care ritual to improve moisturisation and shine, minimise hair damage and prolong colour longevity.

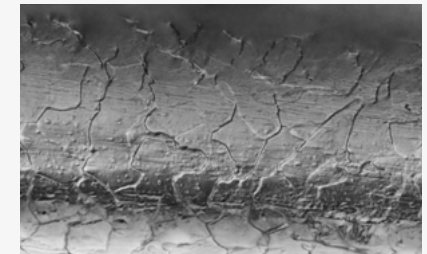
Standard

Bleaching Powder + Toner + Shampoo



Blossom Glow

Omniplex Bleaching Powder + Omniplex Blossom Glow Toner + Omniplex Blossom Glow Bond Care Shampoo and Mask

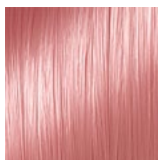


Microscope analysis confirms a better quality and smoothness of hair with omniplex system.

DISCOVER THE COLLECTION

T 10.21 Ice Irisée

Neutralize pale yellow and yellow tones. Perfect to create cool blondes with a subtle iridescent hue.

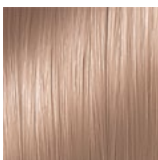


T PINK

Trendy rosé tones for the perfect pastel look.

T 9.22 Biscuit

Elegant tone with a violet base for a fresh and classy look.

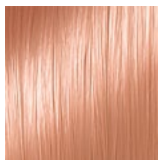
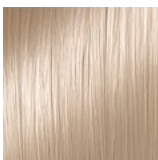


T 9.5 Brown Mahogany

Enriching and cool rosewood tones for a romantic, delicate look.

T 10.02 Sand

Perfect to enhance light and vibrancy of hair that don't need particular neutralisation.



T 10.43 Apricot

Delicate and light tones of copper and gold for a fresh sophisticated look.

T 8.12 Steel

Neutralize yellow and orange yellow tones.

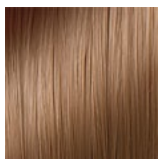
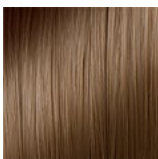


T 10.11 Ash

Neutralize orange and red tones with its blue underbase.

DT 9.13 Beige

Soft beige tone.



DT 9.82 Milk Chocolate

Soft brown with a touch of violet.

DT 7.8 Chestnut

Delicate, neutral brown tone direction.



DT 6.12 Graphite

Intense anthracite tone. Ideal also as tonalizer for men.

HOW TO USE BLOSSOM GLOW TONER

End the bleaching process using Omniplex Blossom Glow Bond Care Shampoo then towel-dry locks so they are ready for colour.

- 1 Mix 1 part of Toner with 2 parts of Tone On Tone Developer or 10 Vol. (3%) Cream Developer.

**Mix
1:2**

- 2 Apply in fine sections, the toner can be applied on damp, towel-dried or dry hair using a generous quantity of product.



Easy application.
Suitable for both shaker and brush use.

- 3 Leave on the hair up to 20 min. while checking development visually.



Up to 20 min.
Balancing



Up to 10 min.
Refreshing

- 4 Rinse the hair until water runs clear and apply Omniplex Blossom Glow **Bond Care Shampoo**. Rinse. Apply Omniplex Blossom Glow **Bond Care Mask**, leave on 3-5 min. Rinse. Then dry hair and style as desired.

BLOSSOM GLOW

BOND CARE RITUAL



Premium treatment line.

The innovative **Bond Care Shampoo** and **Bond Care Mask** ensure a superior blonde hair quality and long lasting colour results.

Rich in high active ingredients.

Omniplex Tech + Vegetal Keratin

Bond Care Shampoo and Mask are available in:

- Professional size: 1000 ml / 33.8 fl.oz.

Ensure proper after care **IN-SALON**: Bond Care Shampoo (sulphate free) and Bond Care Mask (acid pH).

- Retail size: 250ml / 8.45 fl.oz.
- KIT (containing both shampoo and mask - size 250ml / 8.45fl.oz)

Recommend Blossom Glow Bond Care for the **AT HOME** maintenance to your clients.



BOND CARE SHAMPOO



Bond Care Shampoo, with Omniplex Tech and Vegetal Keratin, helps to **reinforce bonds**, while cleansing, **illuminating** and **nourishing hair**. Perfect for **all hair types**, particularly indicated for **colored and damaged hair**. *How to use:* apply to wet hair, massage gently and rinse. Available in 250ml and 1000ml size (8.45 fl.oz. and 33.8 fl.oz.).

Why is it special?

Micellar shampoo, ideal for colored hair.

Gentle formula, SLES/SLS free.

Acid pH.

Hair is shiny and nourished.

Bonds are repaired, ideal for damaged hair.

Omniplex Technology and Vegetal Keratin give supreme smoothness and healthy looking hair.

Vegan formula.

Dermatologically tested.

pH-Balanced technology.

Fragrance inspired by the blossoming flowers on a breezy spring morning, for long lasting pleasantly scented hair.

SLES / SLS
free

Rich micellar formula
ideal for all hair types in
particular for colored and
damaged hair.

Omniplex
Tech

Protects and
strengthens hair bonds.
Damage protection.
Colour protection.

Vegetal
Keratin

Filling and smoothing
damaged surfaces
for healthy looking hair.

Acid pH

With citric acid optimized
for FarmaVita's hair
colouring cream.

Vegan

Without
animal-derived
ingredients.

BOND CARE MASK

ACTIVE
11%
INGREDIENTS



Bond Care Mask, with Omniplex Tech, Vegetal Keratin and Macadamia Oil, helps to **reinforce capillary bonds**, while **nourishing** the hair leaving it feeling, soft, **shiny** and **healthy-looking**. Perfect for **all hair types**, particularly indicated for **colored and damaged hair**. *How to use:* after shampooing, apply to wet hair and comb through. Leave on 3-5 minutes, then rinse. Available in 250ml and 1000ml size (8.45 fl.oz. and 33.8 fl.oz.).

Why is it special?

Rich mask contains more than 11% of active ingredients.

Deep nourishment without weighing hair down.

Hair is soft, detangled and shiny.

Acid pH.

Bonds are repaired, ideal for damaged hair.

Omniplex Technology and Vegetal Keratin give supreme smoothness and healthy looking hair.

Macadamia Oil for supreme shine and smoothness.

Vegan formula.

Dermatologically tested.

pH-Balanced technology.

Fragrance inspired by the blossoming flowers on a breezy spring morning, for long lasting pleasantly scented hair.

Conditioning
Complex

For a long lasting color
and supreme silkiness.

Omniplex
Tech

Protects and
strengthens hair bonds.
Damage protection.
Colour protection.

Vegetal
Keratin

Filling and smoothing
damaged surfaces
for healthy looking hair.

Acid pH

With citric acid
optimized for
FarmaVita's hair
colouring cream.

Vegan

Without
animal-derived
ingredients.

Macadamia
Oil

Supreme shine
and smoothness.



BU
illuminating, intensifying and reinforcing
Omniplex Tech • Vegetal Keratin • Macadamia oil
maschera illuminante, nutriente e rinforzante
Omniplex Tech • Cheratina Vegetale • Olio di Macadamia
pH Balanced Formula
Farmavita
1000 ml/m e - 33.8 fl.oz.

professional hair colouring cream
TONER
• Ammonia free •
TONALIZZANTE
crema colorante professionale
per capelli
• Senza ammoniaca •
pH Balanced Formula
Farmavita
250 ml/m e - 8.45 fl.oz.

omplex
PROFESSIONAL
SHAMPOO
LOW
ND CARE MASK
intensive nourishing and reinforcing
shampoo • Vegetal Keratin • Macadamia oil
maschera nutriente e rinforzante
Cheratina Vegetale • Olio di Macadamia



FarmaVita®

FARMAVITA s.r.l.
Via Garibaldi 82/84, 22070 Locate varesino (CO) - ITALY
www.farmavita.it